

Genuine TadpoleTape™

From AB Technology Group



Flange, Door & Valve Gasket Tapes & Seals

- High, Very High & Extreme Temperature
- Chemical Resistance

Materials for +500°F to +2300°F Continuous Exposure (+260°C to +1260°C)
and +3000°F Short Duration Exposure (+1648°C)

Industrial • Commercial • Marine • Aerospace • Military

TadpoleTape™ Versions Available:

550°F / 287°C with Chemical Resistance

PTFE Coated Fiberglass TadpoleTape™ with Rope Core Bulb
PTFE Coated Fiberglass TadpoleTape™ with Stainless Steel Mesh Core Bulb
PTFE Coated Fiberglass TadpoleTape™ with Inconel Mesh Core Bulb

550°F / 287°C with Extreme Chemical Resistance

ePTFE expanded PTFE TadpoleTape™ with Rope Core Bulb
ePTFE expanded PTFE TadpoleTape™ with Stainless Steel Mesh Core

550°F / 287°C Tuff-Flex™ with Chemical Resistance and Good Sealing Against Irregular Surfaces

Tuff-Flex™ TadpoleTape™ with Rope Core Bulb

1000°F / 537°C Applications

Fiberglass Precision TadpoleTape™ with Rope Core Bulb
Fiberglass TadpoleTape™ with Rope Core Bulb
Fiberglass TadpoleTape™ with Stainless Steel Mesh Core Bulb
Fiberglass TadpoleTape™ with Inconel Mesh Core Bulb

1500°F / 815°C Applications

Vermiculite Coated Fiberglass TadpoleTape™ with Rope Core
Vermiculite Coated Fiberglass TadpoleTape™ with Stainless Steel Mesh Core Bulb
Vermiculite Coated Fiberglass TadpoleTape™ with Inconel Mesh Core Bulb

1800°F / 982°C Applications

InSiilMax™ TadpoleTape™ with Silica Rope Core Bulb
InSiilMax™ TadpoleTape™ with Stainless Steel Mesh Core
InSiilMax™ TadpoleTape™ with Inconel Mesh Core

2000°F / 1093°C Applications

InSiilMax™ XT TadpoleTape™ with Silica Rope Core Bulb
InSiilMax™ XT TadpoleTape™ with Stainless Steel Mesh Core
InSiilMax™ XT TadpoleTape™ with Inconel Mesh Core

2300°F / 1260°C Applications

CerMax™ TadpoleTape™ with Rope Core Bulb
CerMax™ TadpoleTape™ with Stainless Steel Mesh Core
CerMax™ TadpoleTape™ with Inconel Mesh Core

Standard Product Listing

Item.....	Page
Product Gallery	i

Precision TadpoleTape™

Very High-Temperature – 1000°F

Fiberglass Based Products

Very High Temperature Precision Fiberglass TadpoleTape™	1
---	---

Heavy Duty TadpoleTape™

High Temperature & Chemical Resistance – 550°F / 287°C

PTFE Coated and ePTFE High Temperature & High Chemical Resistance Products

High Temperature & Chemical Resistance PTFE Coated Fiberglass TadpoleTape™: Heavy Duty – Rope or Wire Mesh Core	2
High Temperature & Chemical Resistance ePTFE TadpoleTape™: Heavy Duty with Rope or Wire Mesh Core	3

Tuff-Flex™ High Temperature TadpoleTape™ – 550°F / 287°C

Tacky Cloth – With or Without Wire Insert

Tuff-Flex™ High Temperature TadpoleTape™ with Rope Core with/without Wire Insert.....	4
---	---

Very High-Temperature – 1000°F / 537°C

Fiberglass Based Products

Very High Temperature Fiberglass TadpoleTape™: Heavy Duty: Rope or Wire Mesh Core	5
---	---

Very High-Temperature – 1500°F / 815°C

Fiberglass Based with Vermiculite Coating Products

Very High Temperature Vermiculite Coated Fiberglass TadpoleTape™: Heavy Duty with Rope or Wire Mesh Core	6
---	---

Extreme Temperature – 1800°F / 982°C

Silica Based Products

Extreme Temperature InSilMax™ TadpoleTape™: Heavy Duty with Rope or Wire Mesh Core.....	7
---	---

Extreme Temperature – 2000°F / 1093°C

Silica Based Products

Extreme Temperature InSilMax™ TadpoleTape™: Heavy Duty with Rope or Wire Mesh Core.....	8
---	---

Extreme Temperature – 2300°F / 1260°C

Silica Based Products

Extreme Temperature InSilMax™ TadpoleTape™: Heavy Duty with Rope or Wire Mesh Core.....	9
---	---

Standard Terms and Conditions.....	9
------------------------------------	---

Account Application.....	10
--------------------------	----

High, Very High & Extreme Temperature Tadpole Tape

Fax Orders: 610-340-9054 Telephone Orders: 610-906-3549 www.TadpoleTape.com

NOTES

PTFE Products. Polytetrafluoroethylene (PTFE) is a fluorocarbon-based polymer material. (Teflon® is a DuPont reg. trademark and is a brand of PTFE). It is made by free radical polymerization of tetrafluoroethylene and has a carbon backbone chain. Each carbon has two fluorine atoms attached to it. It is hydrophobic (hates water), biologically inert, non-biodegradable and also has very low friction characteristics. The chemical inertness of PTFE is related to the strength of the fluorine-carbon bond and this is why nothing sticks to PTFE. When stretched, PTFE forms a strong porous material called expanded PTFE (ePTFE) which makes excellent mechanical sealing materials.

Temperature Ratings. The temperature ratings listed for these products is the maximum continuous "heat soaked" exposure. The ratings are deliberately conservative so that there will be a buffer of several hundred degrees to allow for over-temperature conditions without detrimental effect or failure of the material.

For most materials, short duration exposure to considerable higher temperatures is possible. Short duration can be several minutes to an hour, and depends on the particular circumstances and installation. One of the important considerations is "heat soak" – materials with thermal inertia will withstand extended temperature exposure without becoming heat soaked.

Materials

Selecting Materials

Selecting materials and designing a protection system can be assisted by understanding the kind of heat in the situation.

Ambient Heat. This is the surrounding atmospheric temperature in the area, situation or environment. For example, in an office it might be 70°F, in a firewalk it might be 2000°F.

Conductive Heat. This is the heat from direct contact with an object: picking up a hot try from an industrial oven or kiln at 500°F or the surface of a furnace wall at 1000°F

Radiant Heat. Objects like the Sun, or fire, or molten metal streams, glowing slabs or billets of metal radiate heat waves, which can travel through space or air or objects, and is absorbed by people or other objects. A great example is that it feels cooler standing in shade on a hot day as the shade blocks the radiant heat waves from the sun.

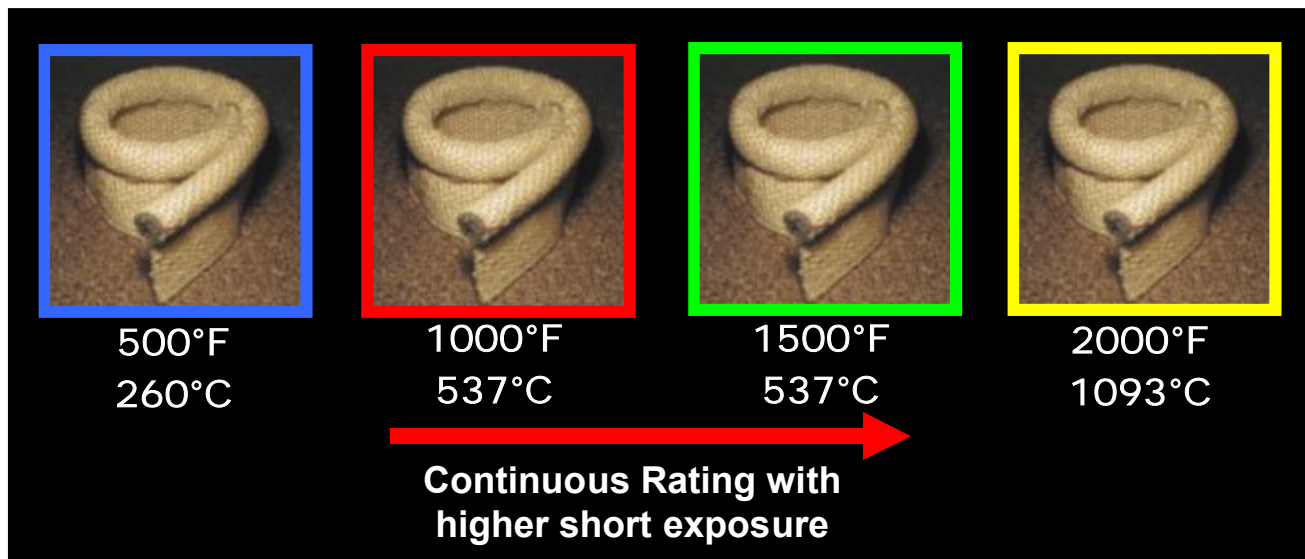
Molten Metal Splash or Weld Splatter. Materials with high temperature silicone rubber coating provide excellent protection from molten metal splash and weld splatter as the splash/splatter does not stick to the silicone. As well, the silicone has a high thermal dispersion, quickly dissipating the heat and preventing burn-through. The heavier or larger the splash/splatter then the heavier grade of silicone coated material should be selected.

AB Technology Group

114 Shore Dr., Bath, ON K0H 1G0 CANADA
431 State Street Box 1491, Ogdensburg, NY 13669

**Color Coded Pictures to Help You Choose The Correct Product
for Your Application. Need Help? Expert Advice By Phone or E-mail.**

Technical Assistance: (610) 906-3549 or info@TadpoleTape.com



Pricing: Prices shown are \$USD and may be subject to change without notice.

Credit Card, Fax & E-mail Orders: We accept Visa, MasterCard, Discover & American Express. Fax your Purchase Order to 610-340-9054 or email to: orders@FiresleeveAndTape.com.

Verbal PO's: Call 610-906-3549. We will accept verbal PO's from existing customers by using a generic PO form; once all the data has been entered from your verbal instructions it will be faxed to you for approval. Please authorize it and then fax it to us. Minimum order is \$ 50.00. Some products also have minimum order quantity levels.

Account Set-up: Please complete our Account Application (at rear of catalog) and return the form along with your standard credit reference sheet. Account application processing can take 2 to 3 business days.

Most Orders Shipped Same Day: The vast majority of products are always in stock and will ship same day providing you order on-line, by fax or call by 1PM EST. Fabricated items require more time – please call for a fabrication quote. Sleeve with Velcro can typically be produced in 2 to 3 days, however it can run 5 to 7 business days for large orders or if we are particularly busy. Other fabrications such as equipment covers, curtains, shields, muffler and turbo covers, etc. can take up to 10 business days. Please call for an estimate.

Shipping: Unless otherwise specified, orders will be shipped UPS ground, prepaid and billed or on your account. For Dealers or Distributors, Blind or Drop shipping to your customer is available – please specify on your PO if you will be providing a Packing List and send it to us ASAP. We can also use your carrier and account if you prefer.

Products & Applications: Our High Temperature Protection Materials have wide ranging application in industry, aviation, marine and military markets. They are most commonly used in steel making, metal processing & refining, smelting, foundries, robotic welding, heat treating, steam plants, power plants (fossil and nuclear), engine and vehicle manufacturing, tire and glass manufacturing, brick & tile manufacturing, petrochemical refining, etc. In fact, any industry with a hot process, boiler, oven or kiln can use our products. It is the customers' responsibility to ensure the suitability of products to applications.

Customer Service Excellence: We are focused on customer service; your assurance of the correct product, quality checked & delivered on-time. All products are RoHS compliant.

We Offer Shipping From USA and Canadian Warehouses

Check for New Catalogs & Updates at our website – www.TadpoleTape.com

USA: 431 State Street Box 1491, Ogdensburg, NY 13669
CANADA: 114 Shore Dr., Bath, ON K0H 1G0

High, Very High & Extreme Temperature Tadpole Tape

Fax Orders: 610-340-9054 Telephone Orders: 610-906-3549 www.TadpoleTape.com

Product Gallery



Very High Temperature
Fiberglass Precision
TadpoleTape™ Gaskets.
1000°F / 537°C
Page 1



High Temperature &
Chemical Resistance
PTFE Coated
TadpoleTape™.
550°F / 287°C
Page 2



High Temperature &
Chemical Resistance
TadpoleTape™
550°F / 287°C
Page 3



Fiberglass "Tacky Cloth"
TadpoleTape™.
550°F / 287°C
Page 4



Very High Temperature
Fiberglass Precision
TadpoleTape™.
1000°F / 537°C
Page 5



Very High Temperature
TadpoleTape™.
1500°F / 815°C
Page 6



Extreme Temperature
TadpoleTape™
2000°F / 1093°C
Page 7

Intentionally Blank

Very High Temperature Precision Fiberglass TadpoleTape™



Ideal for smaller kilns, oven doors in labs and commercial/consumer ovens.

1000°F / 537°C continuous rating, high insulation value & excellent personnel protection

TadpoleTape™ gasket is designed to provide a high temperature thermal seal in industrial, laboratory, commercial and residential ovens and dryers.

Fabricated from high quality type E fiberglass that will not burn and will withstand continuous exposure to temperatures of 1000°F / 520°C.

The bulb of the tadpole may be filled with a variety of materials depending on the application; either fiberglass rope or stainless mesh rope, in order to achieve the desired compressability. The bead of the tadpole seal may be left empty or filled as well.

This product resists most acids and alkalis and is unaffected by most bleaches and solvents. It is highly flexible and conformable.

The base fiber is manufactured to the specifications of ASTM D-578, ASTM committee D13, and subcommittee D13.18.

The gasket jacket is available in grey, dark grey and black.

Pricing is on application.

550°F / 287°C Tadpole Tape™ High Temperature & Chemical Resistance PTFE Coated Fiberglass with Rope or Wire Mesh Core



- PTFE Coating

Made from our heavy duty fabrics and ropes/wire mesh, this is a soft and resilient gasket material for effective sealing on light metal flanges and where limited bolting force is available – and where doors and other closures rest on the bulb of the packing. This fabric offers the advantage of a non-asbestos material with higher temperature range and with excellent resistance to almost all solvents, caustics and acids. The base fabric is rated to 1000°F / 537°C. PTFE melting point is 620°F / 327°C.

Standard lengths of 50 and 100 feet. For By The Foot pricing: add 25% to price shown

Tadpole Tape™ High Temperature & Chemical Resistance PTFE Coated Fiberglass with Rope Core

Part Number	Over All Width in / mm	Price per Foot By Bulb Size: A / B / C / D / E in / mm				
		"A"	"B"	"C"	"D"	"E"
		.375 / 7.9	.500 / 13	.625 / 15.8	.750 / 19	1.000 / 25
TT-FG-PT-RC-M025-16-X	1.00 / 25	\$ 5.56	\$ 5.80	\$ 6.52	NA	NA
TT-FG-PT-RC-M032-20-X	1.25 / 32	\$ 5.96	\$ 6.24	\$ 7.32	NA	NA
TT-FG-PT-RC-M038-24-X	1.50 / 38	\$ 6.72	\$ 6.96	\$ 8.04	\$ 7.80	NA
TT-FG-PT-RC-M044-28-X	1.75 / 44	\$ 7.48	\$ 7.72	\$ 8.80	\$ 8.60	\$ 11.72
TT-FG-PT-RC-M051-32-X	2.00 / 51	\$ 8.08	\$ 8.52	\$ 9.76	\$ 9.28	\$ 12.12
TT-FG-PT-RC-M063-40-X	2.50 / 63	\$ 9.16	\$ 9.44	\$ 10.76	\$ 10.24	\$ 12.48
TT-FG-PT-RC-M076-48-X	3.00 / 76	\$ 10.08	\$ 10.36	\$ 11.00	\$ 11.24	\$ 13.04

TadpoleTape™ High Temperature & Chemical Resistance: PTFE Coated Fiberglass with Stainless Steel or Inconel Mesh Core

Part Number	Over All Width in / mm	Price per Foot By Bulb Size: A / B / C / D / E in / mm and choice of Stainless Steel / Inconel Bulb				
		"A"	"B"	"C"	"D"	"E"
		.375 / 7.9 SS / Inconel	.500 / 13 SS / Inconel	.625 / 15.8 SS / Inconel	.750 / 19 SS / Inconel	1.000 / 25 SS / Inconel
TT-FG-PT-MC-M025-16-X-Z	1.00 / 25	\$8.72 / \$11.02	\$9.12 / \$12.48	\$11.52 / \$14.00	NA	NA
TT-FG-PT-MC-M032-20-X-Z	1.25 / 32	\$9.12 / \$11.68	\$9.52 / \$13.12	\$12.28 / \$14.64	NA	NA
TT-FG-PT-MC-M038-24-X-Z	1.50 / 38	\$9.84 / \$12.00	\$10.24 / \$13.80	\$13.02 / \$15.28	\$16.36 / \$26.24	NA
TT-FG-PT-MC-M044-28-X-Z	1.75 / 44	\$10.64 / \$12.96	\$11.04 / \$14.44	\$13.76 / \$16.24	\$17.12 / \$26.92	\$25.84 / \$32.00
TT-FG-PT-MC-M051-32-X-Z	2.00 / 51	\$11.28 / \$13.64	\$11.76 / \$15.16	\$14.72 / \$17.44	\$17.80 / \$27.64	\$26.31 / \$32.80
TT-FG-PT-MC-M063-40-X-Z	2.50 / 63	\$12.28 / \$15.12	\$12.64 / \$16.60	\$15.72 / \$19.08	\$18.88 / \$29.03	\$26.55 / \$34.08
TT-FG-PT-MC-M076-48-X-Z	3.00 / 76	\$13.20 / \$16.20	\$13.56 / \$17.48	\$16.76 / \$25.56	\$19.72 / \$30.80	\$27.12 / \$35.80

For the "X" value: specify either A, B, C, D, or E
For the "Z" value: specify "S" for Stainless Steel or "I" for Inconel

The PTFE is applied to the tadpole tape by dipping the tape through an immersion tank of liquid PTFE dispersion. The tape is then air dried as it leaves the dip tank. The result is a PTFE coating on the tape which is soft, robust and flexible; however, it can be abrasively removed from the tape with aggressive fingernail scraping, resulting in a thinner and thinner layer of ptfе remaining with each pass. The PTFE also causes the yarns to be sealed and the small gaps between the yarns filled, resulting in an almost air-tight / liquid-tight tape.

550°F / 287°C TadpoleTape™ High Temperature & Chemical Resistance ePTFE with Rope or Wire Mesh Core



- Made from expanded PTFE (ePTFE)

Pure ePTFE tape formed into a tadpole with either a rope core or stainless steel mesh core.

Excellent corrosion resistance, high pressure resistance, easy to use.

Excellent resistance to almost all solvents, caustics and acids.

PTFE melting point is 620°F / 327°C.

Standard Roll of 100 feet. Sold in Full Rolls Only

TadpoleTape™ ePTFE with Rope Core						
Part Number	Over All Width in / mm	Price per Roll By Bulb Size: A / B / C / D / E				
		in / mm				
		"A" .375 / 7.9	"B" .500 / 13	"C" .625 / 15.8	"D" .750 / 19	"E" 1.000 / 25
TT-EPT-RC-M025-16-X	1.00 / 25	\$ 915.33	\$ 1147.50	NA	NA	NA
TT-EPT-RC-M032-20-X	1.25 / 32	\$ 1092.67	\$ 1340.00	\$ 1240.33	NA	NA
TT-EPT-RC-M038-24-X	1.50 / 38	\$ 1250.67	\$ 1497.00	\$ 1422.67	\$ 1512.00	NA
TT-EPT-RC-M044-28-X	1.75 / 44	\$ 1352.50	\$ 1672.33	\$ 2040.00	\$ 2153.33	NA
TT-EPT-RC-M051-32-X	2.00 / 51	\$ 1936.67	\$ 2346.67	\$ 2273.33	\$ 2386.67	\$ 2690.00
TT-EPT-RC-M063-40-X	2.50 / 63	\$ 2430.00	\$ 2790.00	\$ 2740.00	\$ 2853.00	\$ 3156.67
TT-EPT-RC-M076-48-X	3.00 / 76	\$ 2990.00	\$ 3233.00	\$ 3206.67	\$ 3320.00	\$ 3623.33

TadpoleTape™ ePTFE with Stainless Steel Mesh Core						
Part Number	Over All Width in / mm	Price per Roll By Bulb Size: A / B / C / D / E				
		in / mm				
		"A" .375 / 7.9	"B" .500 / 13	"C" .625 / 15.8	"D" .750 / 19	"E" 1.000 / 25
TT-EPT-MC-M025-16-X-S	1.00 / 25	\$ 1376.67	\$ 1456.67	NA	NA	NA
TT-EPT-MC-M032-20-X-S	1.25 / 32	\$ 1598.00	\$ 1695.00	\$ 1823.33	NA	NA
TT-EPT-MC-M038-24-X-S	1.50 / 38	\$ 1798.00	\$ 1896.00	\$ 2056.67	\$ 2453.33	NA
TT-EPT-MC-M044-28-X-S	1.75 / 44	\$ 1930.00	\$ 2123.33	\$ 2290.00	\$ 2686.67	NA
TT-EPT-MC-M051-32-X-S	2.00 / 51	\$ 2150.00	\$ 2346.67	\$ 2523.33	\$ 2920.00	\$ 3306.67
TT-EPT-MC-M063-40-X-S	2.50 / 63	\$ 2643.33	\$ 2790.00	\$ 2990.00	\$ 3386.67	\$ 3773.33
TT-EPT-MC-M076-48-X-S	3.00 / 76	\$ 3203.33	\$ 3233.33	\$ 3456.67	\$ 3853.33	\$ 4240.00

For the "X" value: specify either A, B, C, D, or E for the bulb size

550°F / 287°C TadpoleTape™ Tuff-Flex™ High Temperature (Tacky Cloth) with Rope Core: With or Without Wire Insert



This tadpole tape is made from Tuff-Flex™ 550 TFF tacky cloth.

This is a widely used tadpole tape that provides a resilient and non-absorbent gasket material for service against steam, air, water and gases.

Especially useful where a rough or uneven surface or flange exists. The fabric is a fiberglass base with a special white rubber formulation. The fabric is tacky, and has a plastic film surface covering that is removed before installation. The fabric will stick to itself once the film is removed.

Wire Inserted Version: The fill (widthwise) yarn for this version of the fabric has a twisted brass wired formed with it, providing additional strength and electrical conductivity/shielding.

Tuff-Flex™ TadpoleTape™ High Temperature White Rubber Coated Fiberglass Tacky Cloth with Rope Core: with or without wire insert						
Part Number	Over All Width in / mm	Price per Foot By Bulb Size: A / B / C / D / E in / mm				
		"A" .375 / 7.9	"B" .500 / 13	"C" .625 / 15.8	"D" .750 / 19	"E" 1.000 / 25
TT-FG-TC-M025-16-X-Z	1.00 / 25	\$ 4.80	\$ 5.12	\$ 5.80	NA	NA
TT-FG-TC-M032-20-X-Z	1.25 / 32	\$ 5.00	\$ 5.56	\$ 6.24	NA	NA
TT-FG-TC-M038-24-X-Z	1.50 / 38	\$ 5.48	\$ 5.84	\$ 6.52	\$ 7.48	NA
TT-FG-TC-M044-28-X-Z	1.75 / 44	\$ 6.04	\$ 6.36	\$ 7.04	\$ 8.12	\$ 9.96
TT-FG-TC-M051-32-X-Z	2.00 / 51	\$ 6.60	\$ 6.84	\$ 7.32	\$ 8.84	\$ 11.24
TT-FG-TC-M063-40-X-Z	2.50 / 63	\$ 7.56	\$ 7.84	\$ 8.36	\$ 9.64	\$ 12.84
TT-FG-TC-M076-48-X-Z	3.00 / 76	\$ 8.56	\$ 8.92	\$ 9.40	\$ 10.76	\$ 14.44

For the "X" value in the part number specify either A, B, C, D, or E to correspond to the bulb size

For the "Z" value in the part number use "W" to specify with wire insert use "N" to specify no wire

Same price with and without wire insert

Standard Rolls of 25 and 50 feet. For By-The-Foot pricing: add 25% to price shown.

Curing: It is recommended that this material be cured in situ. This material must be heated to a minimum of 300°F within 60 minutes, then it must sit at 300°F or higher for 90 minutes for the rubber to fully cure.

Do not overtorque the material during this curing time or the rubber will be squeezed off of the base material.

If the material is not fully cured, the rubber will drip from the material causing voids. After curing the material can be exposed to a lower operational temperature.

1000°F / 537°C TadpoleTape™ Very High Temperature Fiberglass with Rope or Wire Mesh Core



Made from our heavy duty fabrics and ropes, this is a soft and resilient gasket material for effective sealing on light metal flanges and where limited bolting force is available – and where doors and other closures rest on the bulb of the packing.

Standard Rolls of 50 and 100 feet. For By-The-Foot pricing add 25% to price shown.

Fabricated from high quality type E fiberglass that will not burn and will withstand continuous exposure to temperatures of 1000°F / 520°C. This product resists most acids and alkalis and is unaffected by most bleaches and solvents. It is highly flexible and conformable.

TadpoleTape™ Very High Temperature & Heat Resistant Fiberglass with Rope Core						
Part Number	Over All Width in / mm	Price per Foot By Bulb Size: A / B / C / D / E				
		in / mm				
		“A” .375 / 7.9	“B” .500 / 13	“C” .625 / 15.8	“D” .750 / 19	“E” 1.000 / 25
TT-FGRC-M025-16-X	1.00 / 25	\$ 2.80	\$ 3.08	\$ 3.48	NA	NA
TT-FGRC-M032-20-X	1.25 / 32	\$ 2.88	\$ 3.20	\$ 3.68	NA	NA
TT-FGRC-M038-24-X	1.50 / 38	\$ 3.08	\$ 3.32	\$ 3.80	\$ 4.20	NA
TT-FGRC-M044-28-X	1.75 / 44	\$ 3.20	\$ 3.44	\$ 4.00	\$ 4.36	\$ 6.88
TT-FGRC-M051-32-X	2.00 / 51	\$ 3.24	\$ 3.68	\$ 4.28	\$ 4.48	\$ 6.44
TT-FGRC-M063-40-X	2.50 / 63	\$ 3.64	\$ 3.96	\$ 4.68	\$ 4.80	\$ 6.80
TT-FGRC-M076-48-X	3.00 / 76	\$ 3.96	\$ 4.24	\$ 4.64	\$ 5.16	\$ 7.04

TadpoleTape™ Very High Temperature & Heat Resistant Fiberglass With Stainless Steel or Inconel Mesh Core						
Part Number	Over All Width in / mm	Price per Foot By Bulb Size: A / B / C / D / E				
		in / mm				
		“A” .375 / 7.9 SS / Inconel	“B” .500 / 13 SS / Inconel	“C” .625 / 15.8 SS / Inconel	“D” .750 / 19 SS / Inconel	“E” 1.000 / 25 SS / Inconel
TT-FGMC-M025-16-X-Z	1.00 / 25	\$5.84 / \$7.08	\$6.24 / \$8.20	\$8.32 / NA	NA	NA
TT-FGMC-M032-20-X-Z	1.25 / 32	\$5.92 / \$7.16	\$6.32 / \$8.32	\$8.48 / \$9.04	NA	NA
TT-FGMC-M038-24-X-Z	1.50 / 38	\$6.04 / \$7.20	\$6.44 / \$8.48	\$8.56 / \$9.16	\$12.56 / \$18.20	NA
TT-FGMC-M044-28-X-Z	1.75 / 44	\$6.20 / \$7.48	\$6.56 / \$8.64	\$8.76 / \$9.32	\$12.68 / \$18.40	\$20.64 / \$22.28
TT-FGMC-M051-32-X-Z	2.00 / 51	\$6.28 / \$7.72	\$6.76 / \$8.88	\$9.04 / \$9.60	\$12.80 / \$18.56	\$20.64 / \$22.48
TT-FGMC-M063-40-X-Z	2.50 / 63	\$6.60 / \$8.08	\$6.96 / \$9.20	\$9.40 / \$9.88	\$13.20 / \$18.92	\$20.72 / \$22.80
TT-FGMC-M076-48-X-Z	3.00 / 76	\$6.88 / \$8.36	\$7.24 / \$9.80	\$12.84 / \$10.48	\$13.40 / \$19.64	\$20.80 / \$23.40

For the “X” value: specify either A, B, C, D, or E
For the “Z” value: specify “S” for Stainless Steel or “I” for Inconel

1500°F / 815°C TadpoleTape™ Very High Temperature Vermiculite Coated Fiberglass with Rope or Wire Mesh Core



Made from our heavy duty fabrics and ropes/wire mesh, this is a soft and resilient gasket material for effective sealing on light metal flanges and where limited bolting force is available – and where doors and other closures rest on the bulb of the packing.

Standard lengths of 50 and 100 feet. For By-The-Foot pricing: add 25% to price shown:

Fabricated from high quality type E fiberglass that will not burn and will withstand continuous exposure to temperatures of 1000°F / 520°C. This product resists most acids and alkalis and is unaffected by most bleaches and solvents. It is highly flexible and conformable.

TadpoleTape™ Vermiculite Coated Fiberglass with Rope Core						
Part Number	Over All Width in / mm	Price per Foot By Bulb Size: A / B / C / D / E in / mm				
		"A" .375 / 7.9	"B" .500 / 13	"C" .625 / 15.8	"D" .750 / 19	"E" 1.000 / 25
TT-FG-VC-RC-M025-16-X	1.00 / 25	\$ 4.20	\$ 4.64	\$ 5.24	NA	NA
TT-FG-VC-RC-M032-20-X	1.25 / 32	\$ 4.36	\$ 4.80	\$ 5.52	NA	NA
TT-FG-VC-RC-M038-24-X	1.50 / 38	\$ 4.64	\$ 5.00	\$ 5.64	\$ 6.32	NA
TT-FG-VC-RC-M044-28-X	1.75 / 44	\$ 4.80	\$ 5.20	\$ 5.96	\$ 6.56	\$ 10.32
TT-FG-VC-RC-M051-32-X	2.00 / 51	\$ 4.88	\$ 5.52	\$ 6.44	\$ 6.76	\$ 10.56
TT-FG-VC-RC-M063-40-X	2.50 / 63	\$ 5.48	\$ 5.92	\$ 7.01	\$ 7.20	\$ 10.82
TT-FG-VC-RC-M076-48-X	3.00 / 76	\$ 5.92	\$ 6.36	\$ 7.32	\$ 7.72	\$ 11.05

TadpoleTape™ Vermiculite Coated Fiberglass with Stainless Steel or Inconel Mesh Core						
Part Number	Over All Width in / mm	Price per Foot By Bulb Size: A / B / C / D / E in / mm				
		"A" .375 / 7.9 SS / Inconel	"B" .500 / 13 SS / Inconel	"C" .625 / 15.8 SS / Inconel	"D" .750 / 19 SS / Inconel	"E" 1.000 / 25 SS / Inconel
TT-FG-VC-MC-M025-16-X-Z	1.00 / 25	\$7.36 / \$8.60	\$8.40 / \$9.16	\$9.36 / \$12.20	NA	NA
TT-FG-VC-MC-M032-20-X-Z	1.25 / 32	\$7.68 / \$8.72	\$8.72 / \$9.28	\$9.72 / \$12.48	NA	NA
TT-FG-VC-MC-M038-24-X-Z	1.50 / 38	\$7.80 / \$8.92	\$9.08 / \$9.44	\$10.04 / \$12.60	\$18.08 / \$18.48	NA
TT-FG-VC-MC-M044-28X-Z	1.75 / 44	\$8.32 / \$9.08	\$9.40 / \$9.60	\$10.60 / \$12.88	\$18.44 / \$18.64	\$22.12 / \$22.36
TT-FG-VC-MC-M051-32-X-Z	2.00 / 51	\$8.88 / \$9.20	\$9.84 / \$9.92	\$11.24 / \$13.32	\$18.92 / \$19.45	\$22.60 / \$22.87
TT-FG-VC-MC-M063-40-X-Z	2.50 / 63	\$9.52 / \$9.72	\$10.64 / \$10.24	\$12.40 / \$13.80	\$19.56 / \$19.81	\$23.24 / \$23.97
TT-FG-VC-MC-M076-48-X-Z	3.00 / 76	\$10.20 / \$10.12	\$11.76 / \$10.56	\$17.72 / \$18.84	\$20.98 / \$21.76	\$23.88 / \$24.56

For the "X" value: specify either A, B, C, D, or E for the bulb size
For the "Z" value: specify "S" for Stainless Steel or "I" for Inconel

1800°F / 982°C InSilMax™ TadpoleTape™ Extreme Temperature with Rope or Wire Mesh Core



Made from our heavy duty fabrics and ropes, this is a soft and resilient gasket material for effective sealing on light metal flanges and where limited bolting force is available – and where doors and other closures rest on the bulb of the packing.

Standard Rolls of 50 and 100 feet. For By-The-Foot pricing add 25% to price shown.

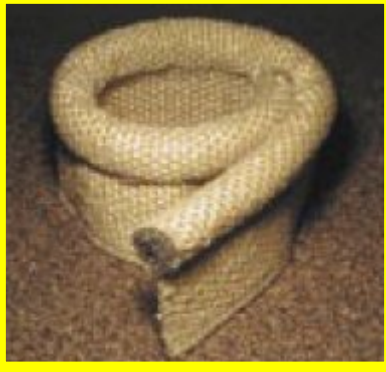
Produced from an extremely pure base fiber (SiO₂) and can be used at 1800°F / 982°C continuously with excursions to 3000°F / 1650°C.

InSilMax™ TadpoleTape™ Extreme High Temperature; Heat & Flame Resistant With Rope Core						
Part Number	Over All Width in / mm	Price per Foot By Bulb Size: A / B / C / D / E in / mm				
		“A” .375 / 7.9	“B” .500 / 13	“C” .625 / 15.8	“D” .750 / 19	“E” 1.000 / 25
TT-S-RC-M025-16-X	1.00 / 25	\$ 7.64	\$ 7.92	\$ 9.64	NA	NA
TT-S-RC-M032-20-X	1.25 / 32	\$ 8.48	\$ 8.68	\$ 10.36	NA	NA
TT-S-RC-M038-24-X	1.50 / 38	\$ 8.72	\$ 9.24	\$ 11.40	\$ 12.44	NA
TT-S-RC-M044-28-X	1.75 / 44	\$ 9.32	\$ 10.08	\$ 12.28	\$ 13.08	\$ 15.92
TT-S-RC-M051-32-X	2.00 / 51	\$ 10.28	\$ 10.60	\$ 12.76	\$ 13.84	\$ 16.29
TT-S-RC-M063-40-X	2.50 / 63	\$ 11.52	\$ 11.96	\$ 13.40	\$ 15.40	\$ 16.87
TT-S-RC-M076-48-X	3.00 / 76	\$ 13.16	\$ 13.40	\$ 14.24	\$ 16.96	\$ 18.97

InSilMax™ TadpoleTape™ Extreme High Temperature; Heat & Flame Resistant with Stainless Steel or Inconel Mesh Core						
Part Number	Over All Width in / mm	Price per Foot By Bulb Size: A / B / C / D / E in / mm and choice of Stainless Steel / Inconel Bulb				
		“A” .375 / 7.9 SS / Inconel	“B” .500 / 13 SS / Inconel	“C” .625 / 15.8 SS / Inconel	“D” .750 / 19 SS / Inconel	“E” 1.000 / 25 SS / Inconel
TT-S-MC-M025-16-X-Z	1.00 / 25	\$7.72 / \$8.40	\$8.60 / \$9.60	\$9.76 / \$10.64	NA	NA
TT-S-MC-M032-20-X-Z	1.25 / 32	\$8.64 / \$9.60	\$8.92 / \$9.92	\$10.52 / \$11.44	NA	NA
TT-S-MC-M038-24-X-Z	1.50 / 38	\$8.88 / \$9.88	\$9.28 / \$10.32	\$11.68 / \$12.76	\$15.40 / \$19.88	NA
TT-S-MC-M044-28-X-Z	1.75 / 44	\$9.52 / \$10.60	\$10.20 / \$11.04	\$12.44 / \$13.60	\$15.88 / \$20.28	\$18.80 / \$23.24
TT-S-MC-M051-32-X-Z	2.00 / 51	\$10.28 / \$11.44	\$10.80 / \$11.98	\$14.32 / \$15.80	\$16.32 / \$20.60	\$19.24 / \$24.16
TT-S-MC-M063-40-X-Z	2.50 / 63	\$11.72 / \$13.04	\$12.04 / \$13.40	\$16.08 / \$17.80	\$17.24 / \$21.36	\$20.16 / \$25.24
TT-S-MC-M076-48-X-Z	3.00 / 76	\$13.36 / \$14.60	\$13.52 / \$15.04	\$16.60 / \$18.32	\$18.16 / \$22.12	\$21.08 / \$25.96

**For the “X” value: specify either A, B, C, D, or E for the bulb size
For the “Z” value: specify “S” for Stainless Steel or “I” for Inconel**

2000°F / 1093°C InSilMax™ XT TadpoleTape™ Extreme High Temperature Heat Flame Resistant With Rope or Wire Mesh Core



Made from our highest purity heavy duty silica fabrics and ropes, this is a soft and resilient gasket material for effective sealing on metal flanges and where limited bolting force is available – and where doors and other closures rest on the bulb of the tape.

Standard Rolls of 50 and 100 feet.

For By-The-Foot pricing: add 25% to price shown:

Produced from an extremely pure base fiber (SiO₂) and can be used at 2000°F / 1093°C continuously.

InSilMax™ XT TadpoleTape™ Extreme High Temperature; Heat & Flame Resistant With Rope Core						
Part Number	Over All Width in / mm	Price per Foot By Bulb Size: A / B / C / D / E in / mm				
		"A" .375 / 7.9	"B" .500 / 13	"C" .625 / 15.8	"D" .750 / 19	"E" 1.000 / 25
TT-SXT-RC-M025-16-X	1.00 / 25	\$ 8.79	\$ 9.11	\$ 11.09	NA	NA
TT-SXT-RC-M032-20-X	1.25 / 32	\$ 9.75	\$ 9.98	\$ 11.91	NA	NA
TT-SXT-RC-M038-24-X	1.50 / 38	\$ 10.03	\$ 10.63	\$ 13.11	\$ 14.31	NA
TT-SXT-RC-M044-28-X	1.75 / 44	\$ 10.72	\$ 11.59	\$ 14.13	\$ 15.05	\$ 18.31
TT-SXT-RC-M051-32-X	2.00 / 51	\$ 11.82	\$ 12.19	\$ 14.67	\$ 15.92	\$ 18.74
TT-SXT-RC-M063-40-X	2.50 / 63	\$ 13.25	\$ 13.75	\$ 15.41	\$ 17.71	\$ 19.40
TT-SXT-RC-M076-48-X	3.00 / 76	\$ 15.13	\$ 15.41	\$ 16.38	\$ 17.81	\$ 21.82

InSilMax™ XT TadpoleTape™ Extreme High Temperature; Heat & Flame Resistant with Stainless Steel or Inconel Mesh Core						
Part Number	Over All Width in / mm	Price per Foot By Bulb Size: A / B / C / D / E in / mm and choice of Stainless Steel / Inconel Bulb				
		"A" .375 / 7.9 SS / Inconel	"B" .500 / 13 SS / Inconel	"C" .625 / 15.8 SS / Inconel	"D" .750 / 19 SS / Inconel	"E" 1.000 / 25 SS / Inconel
TT-SXT-MC-M025-16-X-Z	1.00 / 25	\$8.89 / \$9.66	\$9.89 / \$11.04	\$11.22 / \$11.17	NA	NA
TT-SXT-MC-M032-20-X-Z	1.25 / 32	\$9.94 / \$11.04	\$10.26 / \$11.41	\$12.09 / \$13.16	NA	NA
TT-SXT-MC-M038-24-X-Z	1.50 / 38	\$10.21 / \$11.36	\$10.67 / \$11.87	\$13.43 / \$14.67	\$17.71 / \$22.86	NA
TT-SXT-MC-M044-28-X-Z	1.75 / 44	\$10.95 / \$12.19	\$11.73 / \$12.70	\$14.31 / \$15.64	\$18.26 / \$23.32	\$21.62 / \$26.73
TT-SXT-MC-M051-32-X-Z	2.00 / 51	\$11.82 / \$13.16	\$12.42 / \$13.78	\$16.47 / \$18.17	\$18.77 / \$23.69	\$22.13 / \$27.78
TT-SXT-MC-M063-40-X-Z	2.50 / 63	\$13.48 / \$14.99	\$13.85 / \$15.41	\$18.49 / \$20.47	\$19.83 / \$22.43	\$23.18 / \$29.03
TT-SXT-MC-M076-48-X-Z	3.00 / 76	\$15.36 / \$16.79	\$15.55 / \$17.30	\$19.09 / \$21.07	\$20.88 / \$25.43	\$24.24 / \$29.85

**For the "X" value: specify either A, B, C, D, or E for the bulb size
For the "Z" value: specify "S" for Stainless Steel or "I" for Inconel**

2300°F / 1260°C CerMax™ TadpoleTape™ Extreme High Temperature Heat Flame Resistant With Rope or Wire Mesh Core



Made from our highest temperature ceramic fiber inconel wire inserted materials, this is a soft and resilient gasket material for effective sealing on metal flanges and where limited bolting force is available – and where doors and other closures rest on the bulb of the tape.

Standard Rolls of 50 and 100 feet.

For By-The-Foot pricing: add 25% to price shown:

Can be used at 2300°F / 1260°C continuously.

CerMax™ TadpoleTape™ Extreme High Temperature; Heat & Flame Resistant With Rope Core						
Part Number	Over All Width in / mm	Price per Foot By Bulb Size: A / B / C / D / E				
		in / mm				
		“A” .375 / 7.9	“B” .500 / 13	“C” .625 / 15.8	“D” .750 / 19	“E” 1.000 / 25
TT-C-RC-M025-16-X	1.00 / 25	\$ CALL	\$ CALL	\$ CALL	NA	NA
TT-C-RC-M032-20-X	1.25 / 32	\$ CALL	\$ CALL	\$ CALL	NA	NA
TT-C-RC-M038-24-X	1.50 / 38	\$ CALL	\$ CALL	\$ CALL	\$ CALL	NA
TT-C-RC-M044-28-X	1.75 / 44	\$ CALL	\$ CALL	\$ CALL	\$ CALL	\$ CALL
TT-C-RC-M051-32-X	2.00 / 51	\$ CALL	\$ CALL	\$ CALL	\$ CALL	\$ CALL
TT-C-RC-M063-40-X	2.50 / 63	\$ CALL	\$ CALL	\$ CALL	\$ CALL	\$ CALL
TT-C-RC-M076-48-X	3.00 / 76	\$ CALL	\$ CALL	\$ CALL	\$ CALL	\$ CALL

CerMax™ TadpoleTape™ Extreme High Temperature; Heat & Flame Resistant with Inconel Mesh Core						
Part Number	Over All Width in / mm	Price per Foot By Bulb Size: A / B / C / D / E				
		in / mm and Inconel Mesh Bulb				
		“A” .375 / 7.9 SS / Inconel	“B” .500 / 13 SS / Inconel	“C” .625 / 15.8 SS / Inconel	“D” .750 / 19 SS / Inconel	“E” 1.000 / 25 SS / Inconel
TT-C-MC-M025-16-X	1.00 / 25	\$ CALL	\$ CALL	\$ CALL	NA	NA
TT-C-MC-M032-20-X	1.25 / 32	\$ CALL	\$ CALL	\$ CALL	NA	NA
TT-C-MC-M038-24-X	1.50 / 38	\$ CALL	\$ CALL	\$ CALL	\$ CALL	NA
TT-C-MC-M044-28-X	1.75 / 44	\$ CALL	\$ CALL	\$ CALL	\$ CALL	\$ CALL
TT-C-MC-M051-32-X	2.00 / 51	\$ CALL	\$ CALL	\$ CALL	\$ CALL	\$ CALL
TT-C-MC-M063-40-X	2.50 / 63	\$ CALL	\$ CALL	\$ CALL	\$ CALL	\$ CALL
TT-C-MC-M076-48-X	3.00 / 76	\$ CALL	\$ CALL	\$ CALL	\$ CALL	\$ CALL

**For the “X” value: specify either A, B, C, D, or E for the bulb size
For the “Z” value: specify “S” for Stainless Steel or “I” for Inconel**

Standard Terms and Conditions

- Terms and Conditions Applicable:** The terms and conditions set forth herein shall apply to the order referred to in herein. Our acceptance of this order is expressly made conditional upon assent to the terms and conditions set forth herein, which comprise all of the terms and conditions between AB Technology Group and the purchaser respecting this order, except to the extent that any term or condition shall have been changed or modified as set forth in this agreement. Any other changes or modifications in the terms and conditions contained herein must be specifically agreed to in writing by AB Technology Group.
- Order Minimum:** There will be a minimum order amount of \$75.00 required for each order received. There will be an additional \$15.00 fee for adding items to an existing order under \$100.00. Order minimum does NOT include any tooling, overtime or freight charges. This \$15.00 fee can apply to any change made to an existing order, ex. method of shipment, shipping destination, etc.
- Cancellation:** Any order may not be cancelled for any reason without the consent of AB Technology Group. No orders can be cancelled after production has begun.
- Delivery:** Any shipping dates set forth in the purchase order or any acknowledgment of the order are the best estimate of actual delivery, but may be changed by mutual agreement. AB Technology Group shall not be liable for any delays in delivery or default by reason of any occurrences or contingencies, including, but not limited to fire, flood, embargo, strike, failure to secure materials from suppliers, government restrictions considered "force majeure" or any other circumstance beyond AB Technology Group's control which shall prevent AB Technology Group from making the deliveries in the normal and usual course of business.
- Risk of Loss:** Notwithstanding title to or ownership of the products, risk of loss shall pass to the purchaser as soon as the products are invoiced.
- Taxes and Fees:** Any taxes or fees imposed by any federal, provincial, state, municipal or other governmental authority, including any import or export duty that may be applicable to the sale or delivery or transportation of the product or services that may be sold by reason of this order and any and all duties, tariffs and brokerage charges, shall be added to the price of the order and paid by the purchaser except where the purchaser shall have provided a proper certification of exemption therefrom.
- Method of Shipment:** Unless otherwise specified in any purchase order, acknowledgement or other specific document relating to this order, all shipments made pursuant to the order shall be made F.O.B. Bowmanville ON, or nearest stocking point. In no event shall the method of shipment modify the risk of loss as specified herein. All freight collect unless otherwise specified.
- Terms of Payment:** Unless otherwise specified in the purchase order or acknowledgement, all products shall be sold with full payment due within thirty (30) days, if paid within ten (10) days of date of invoice, buyer may deduct one percent (1%) of the cost of goods only. Discounts are not applicable to tooling, expediting, or transportation charges. Any account for which payment has not been received within sixty (60) days from date of invoice will automatically be put on credit hold. Credit hold will also halt production of any other purchase orders that are in our manufacturing. AB Technology Group welcomes payments by credit cards and electronic fund transfers
- Security Interest:** Until full payment of the purchase price for any product and/or any service order pursuant to the order, AB Technology Group shall retain a security interest in such products and may, at its option, and without further agreement or signature by the purchaser, file evidence of such security interest.
- Warranties:** AB Technology Group warrants to the original purchaser that its products, under normal use, shall be free from defects in material or workmanship provided that (a) the product has not been tampered with or repaired by any person other than AB Technology Group, and (b) the product has been sold or used within the time period specified for the shelf life of the product, and (c) the purchaser notified AB Technology Group in writing of any such defects immediately after discovery thereof. AB Technology Group shall not be liable for any damages for any product resulting from the misuse or negligence of others or if any alterations have been made in the product which have not been authorized in writing by AB Technology Group. THIS WARRANTY IS GIVEN IN LIEU OF ANY OTHER REPRESENTATION OR WARRANTIES, EXPRESS OR IMPLIED, INCLUDING, BUT NOT LIMITED TO, THE IMPLIED WARRANTY OF MERCHANTABILITY OR FITNESS FOR ANY PARTICULAR PURPOSE.
- Limitation of Liabilities:** The sole and exclusive remedies of the purchaser shall be, at the option of AB Technology Group, the return of the products and repayment of the price or the repair and replacement of nonconforming products and in no event shall AB Technology Group be liable for the incidental and consequential damages arising from any cause whatsoever.
- Product Liability:** Purchaser acknowledges that AB Technology Group has no control over and is not responsible for the manner in which the products will be used or otherwise dealt with by the purchaser. The purchaser therefore agrees to assume all responsibility for any and all sums which AB Technology Group and/or the purchaser become obligated to pay because of bodily injury or property damage caused by or resulting directly or indirectly from the installation, maintenance, use or operation of any products or the failure of the products to comply with any safety laws or regulations. Purchaser shall indemnify and hold AB Technology Group harmless from and against any and all actions, claims or demands arising out of or in any way connected with the installation, maintenance, use or operation of the products, or the design, construction or composition of any items or items made or handled by the products supplied hereunder, including any such actions, claims and demands based in whole or in part on the default or negligence.
- Proprietary Rights:** Any and all models, drawings, sketches, plans and other information supplied by one party to the other shall remain the property of the party who shall have supplied it. The other party may not use any such material or information except with respect to the products and/or services, which are subject to this sale transaction. Any product or service sold hereunder shall not constitute a license to use any of the proprietary rights of AB Technology Group.
- Applicable Law:** The terms and conditions of any contract arising out the transaction between the parties hereto shall be construed in accordance with the laws of the Province of Ontario.
- Acceptance:** Hereafter, whether it be verbally or by fax or mail or e-mail, any purchase order issued to AB Technology Group shall fall under these terms and agreement.

New Account Credit Application

Sign and date if forwarding with standard credit reference attachments

Are you assigning AB Technology Group a Vendor Code? If yes, please provide: _____

Legal Business Name: _____

Address: _____ If a PO Box, please also provide street address: _____

Phone _____ Fax: _____

Web Site Address : _____

U.S Companies, FED TAX ID NO. _____

Canadian Companies: Business Registration Number: _____

Provincial Tax Exempt? Yes _____ No _____ PST Number _____

GST Exempt? Yes: ___ No: ___ GST Number: _____

Owner / President / GM _____ Title _____

Form of business: Corporation Limited Liability Company or Limited Partnership
 General Partnership Unincorporated entity

Type of business/industries served: _____

Accounts Payable contact: _____ Tel: _____

Accounts Payable E-mail: _____

Estimated annual purchases \$ _____ 30 day revolving credit amount desired: \$ _____

Bank reference (name/address/phone number/bank account #)

Trade Credit References (name/address/contact information/phone/fax)

Authorizing Signature

Date

By signing this form, the applicant agrees that AB Technology Group may conduct a credit check and exchange information with other parties for the purpose of establishing credit worthiness

Please Note: Standard Credit Terms are 1% 10, Net 30 days